

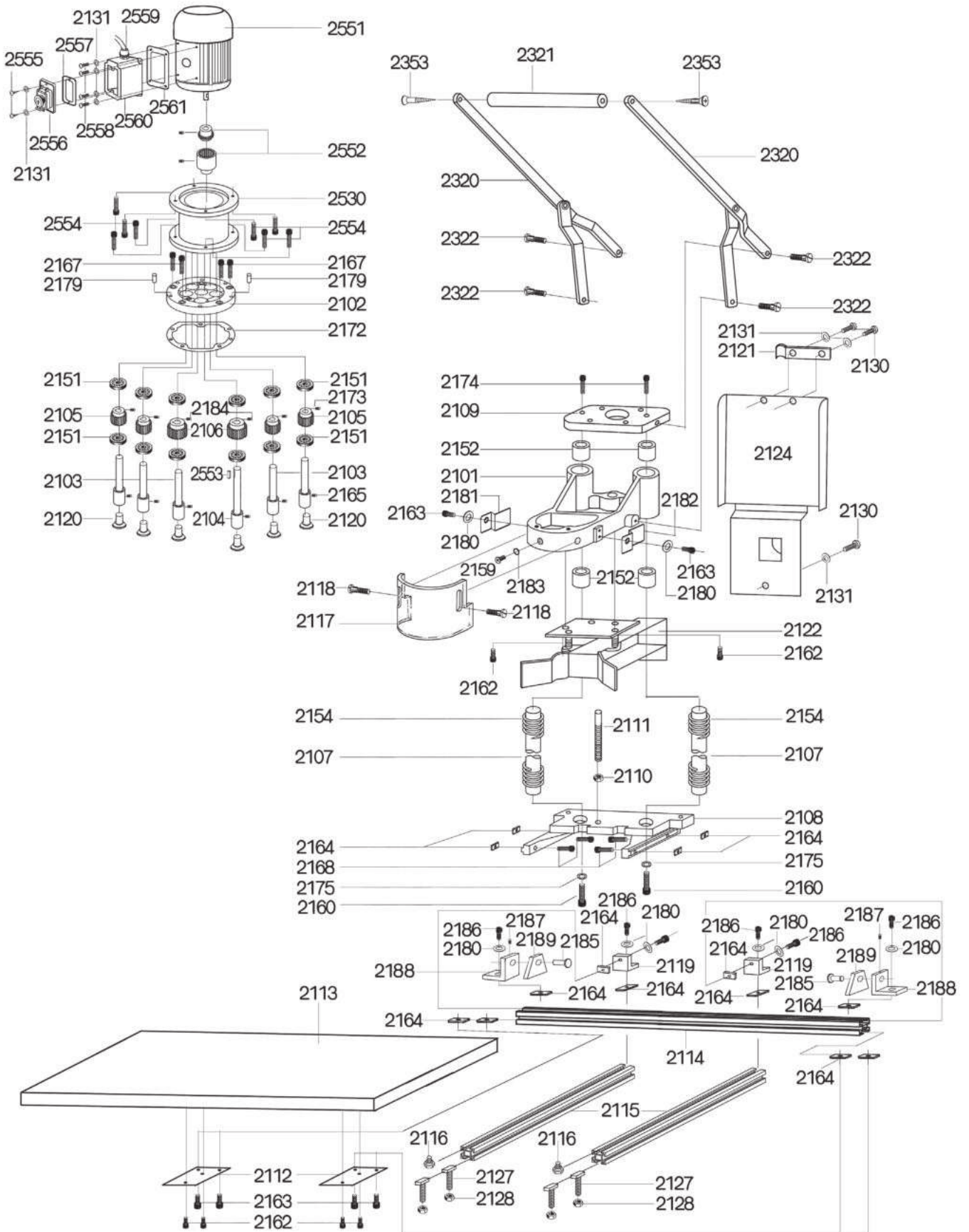
Replacement and expendable parts

9. Replacement and expendable parts

Please note that the manufacturer's declaration or declaration of conformity given by Paul Hettich GmbH & Co. KG as manufacturer will lose its validity if non approved replacement parts are installed.

2101	Boring block	2164	Rhomboid nut M8
2102	Drilling unit cover	2165	Threaded stud GB 80 M5 x 4
2103	Auxiliary spindle with chuck (5 each)	2167	Cheese head screw GB 70 - M 6x12
2104	Main spindle with chuck (1 each)	2168	Cheese head screw GB 70 - M 8x20
2105	Pinion z = 21 (4 each.)	2172	Sealing ring
2106	Pinion z = 32 (2 each.)	2173	Threaded stud SM 15/64x28x5 and SM 15/64x28x7
2107	Guide column	2174	Cheese head screw GB 70 - M 10x35
2108	Base plate	2175	Spring washer GB 958 - A 10 each
2109	connecting bracket	2179	Cylindrical pin GB 119 - A D.4x16
2110	Hexagon nut GB 6170 M 12x1 galvanised	2180	Washer 8
2111	Drill depth stop M 12x1	2181	Left-hand cover
2112	Guide plate	2182	Right-hand cover
2113	Work surface 400 mm x 800 mm	2183	Runner O-ring 3x1.5
2114	Fence 800 mm	2184	Threaded stud with hexagon socket M 5x8
2115	Base profile 465 mm	2185	Shaft for trapezoidal block (2 each)
2116	Guide screw M 6x12	2186	Cheese head screw with hexagon socket M 8x16 (6 each)
2117	guard	2187	Threaded stud GB80 M 5x6 (2 each)
2118	Flat head screw with slot and dog point	2188	Angled element (2 each)
2119	Fence bracket assembly	2189	Trapezoidal block (2 each)
2120	Blanks for unused chucks (76497)	2320	Linkage system for cranked hand lever
2121	Cable grip HM (type 2/6)	2321	Handle rod
2122	Suction extractor funnel assembly (without mounting)	2322	Pan head screw GB 70 M 8x6
2124	Extractor metal cover (without mount)	2353	Countersunk wood screw GB 922 - 6x25
2127	T-slot screw	2530	Motor mount
2128	Hexagon nut	2551	Motor
2130	Self-tapping screw GB 818 - M4x10 (3 each)	2552	BoWex coupler assy
2131	Washer 4	2553	Feather key for coupling GB 1096 - A 3x6
2151	Deep groove ball bearing 6000 -2RS	2554	Cheese head screw GB 70 - M 6x16
2152	Bushes	2555	Cross head self-tapping cheese head screw ST 3.5x16
2154	Compression spring for type 2/6	2556	Switch
2156	Pendulum stop assembly (061 285)	2557	Rubber sealing ring for switch
2159	Cross head countersunk screw M 5x8	2558	Cross head cheese head screw
2160	Cheese head screw with hexagon socket M 10x30 (2 each)	2559	Strain relief
2162	Cheese head screw GB 70 - M 6x10	2560	control console
2163	Cheese head screw GB 70 - M 8x10	2561	Rubber sealing ring for control console

Exploded drawing



en