

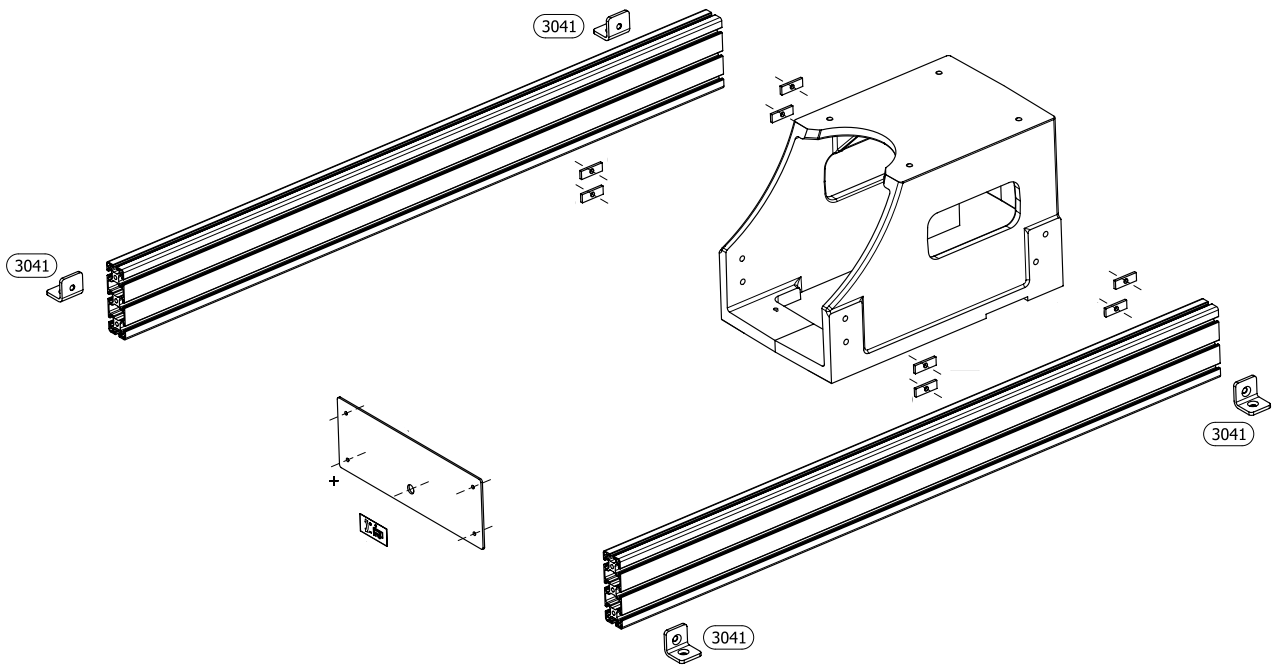
Replacement parts lists

12. Replacement parts lists

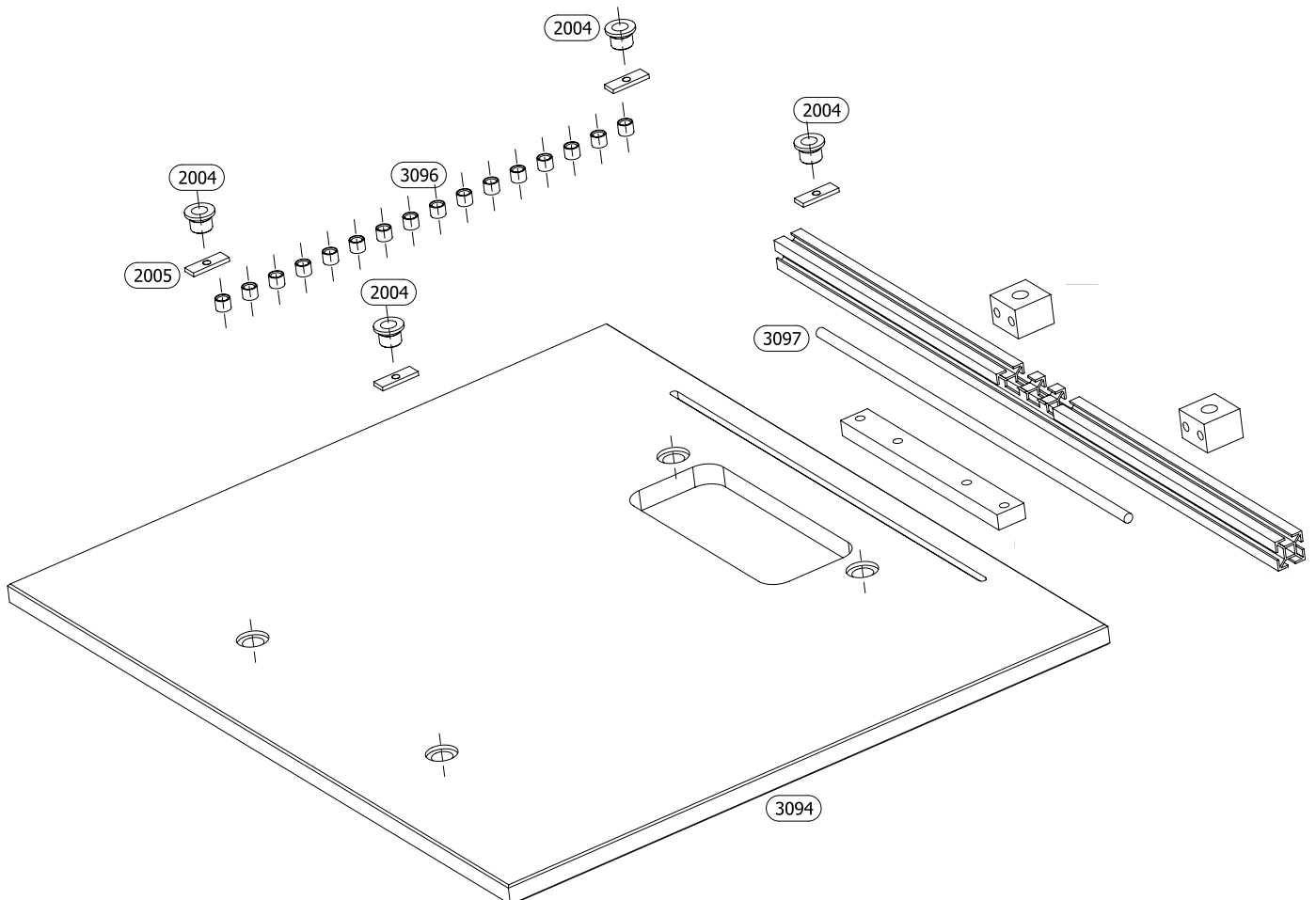
1. Base frame	147
2. Work surface	147
3. Eccentric tensioner	148
4. Guide frame	148
5. Foot extension	149
6. Suction extractor	149
7. Cable drag chain	150
8. Console	150
9. Lifting cylinder	151
10. Drill depth stop	152
11. Adjustable stop	152
12. Clamping element	153
13. Motor with support	154
14. Centre stop	154
15. Press-in frame	155
16. Hold-down clamp, rear	155
17. Hold-down clamp, front	155
18. Drum stop	156
19. Horizontal drilling unit	157
20. Interchangeable drilling unit, 90°, 9 spindles	158
21. Interchangeable drilling unit, 9 spindles	159
22. Interchangeable drilling unit, 6 spindles	159
23. Interchangeable drilling unit, 3 spindles, Seleka (22/9)	159
24. Pneumatics diagram	160
25. Circuit diagram	161

Please note that the manufacturer's declaration or declaration of conformity given by Paul Hettich GmbH & Co. KG as manufacturer will lose its validity if non approved replacement parts are installed.

1. Base frame



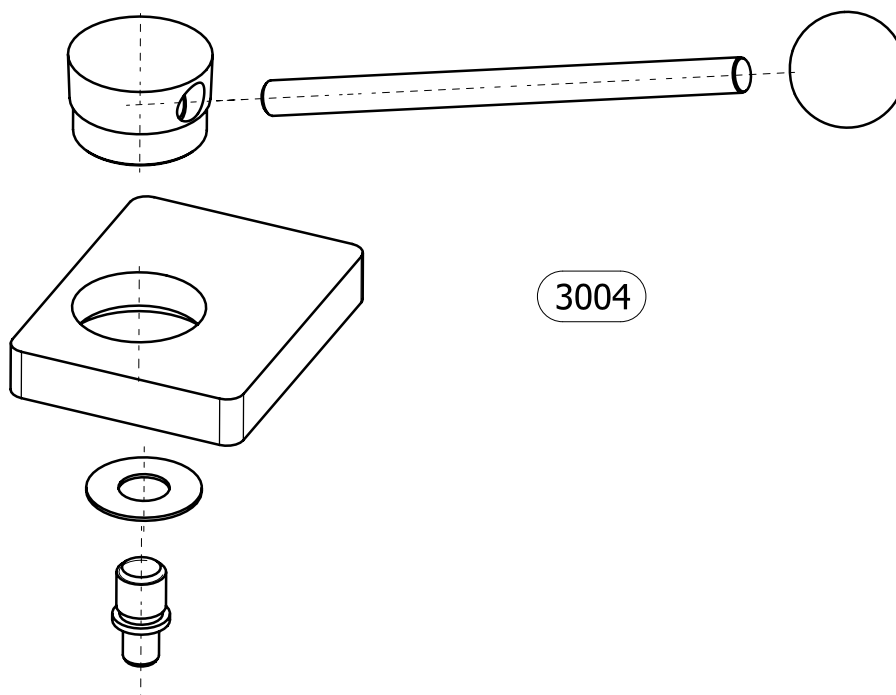
2. Work surface



en

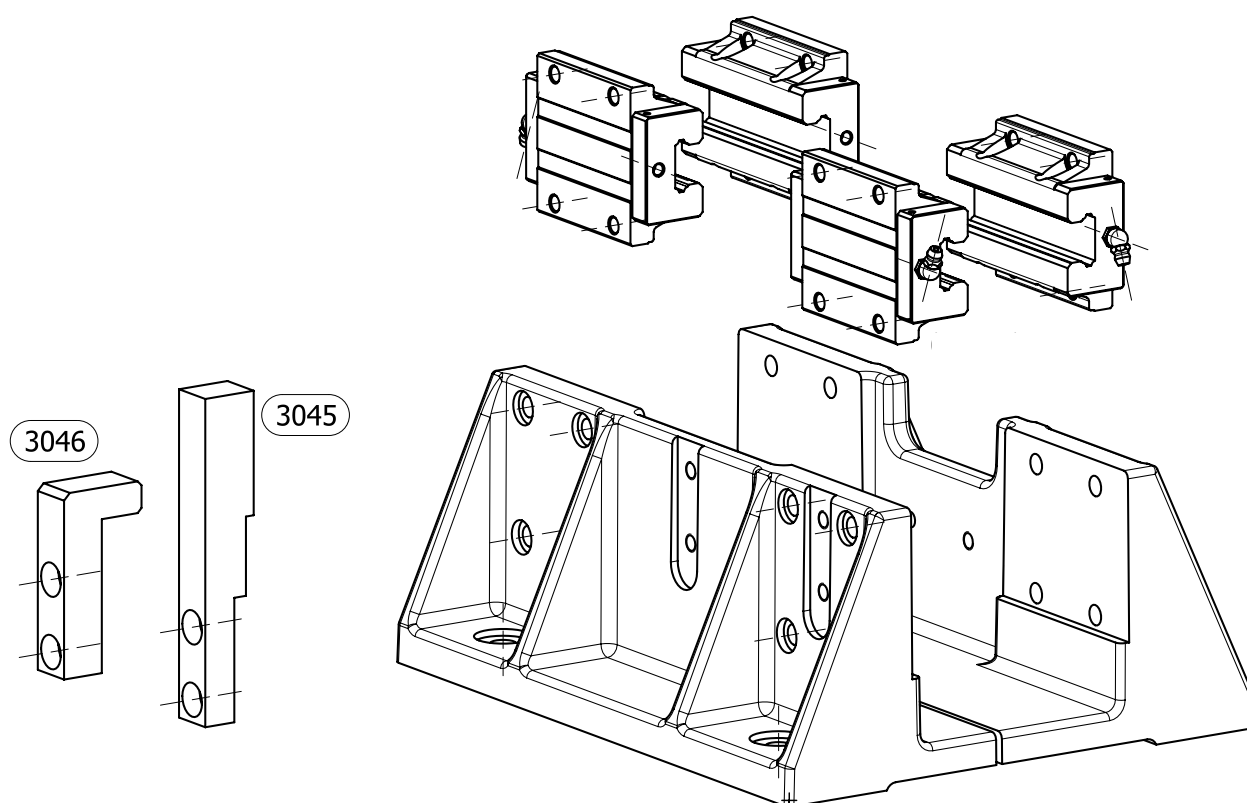
Replacement parts lists

3. Eccentric tensioner

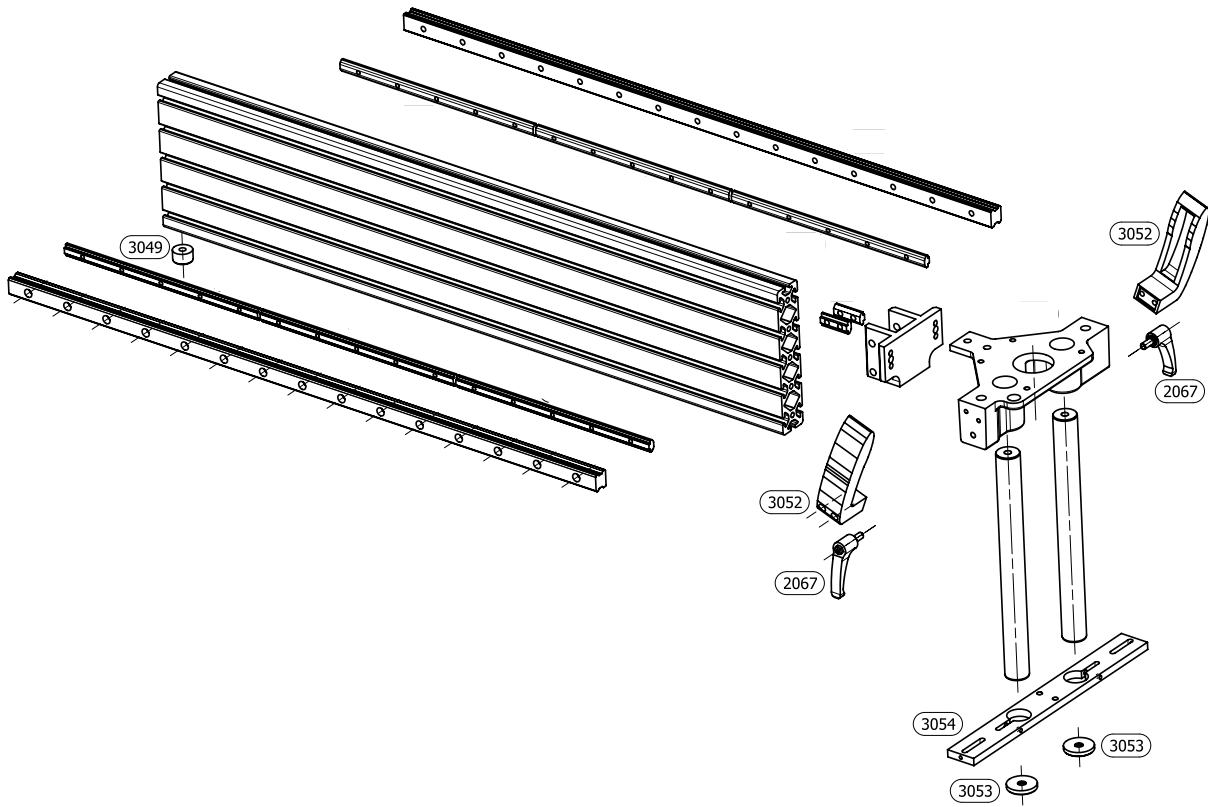


en

4. Guide frame

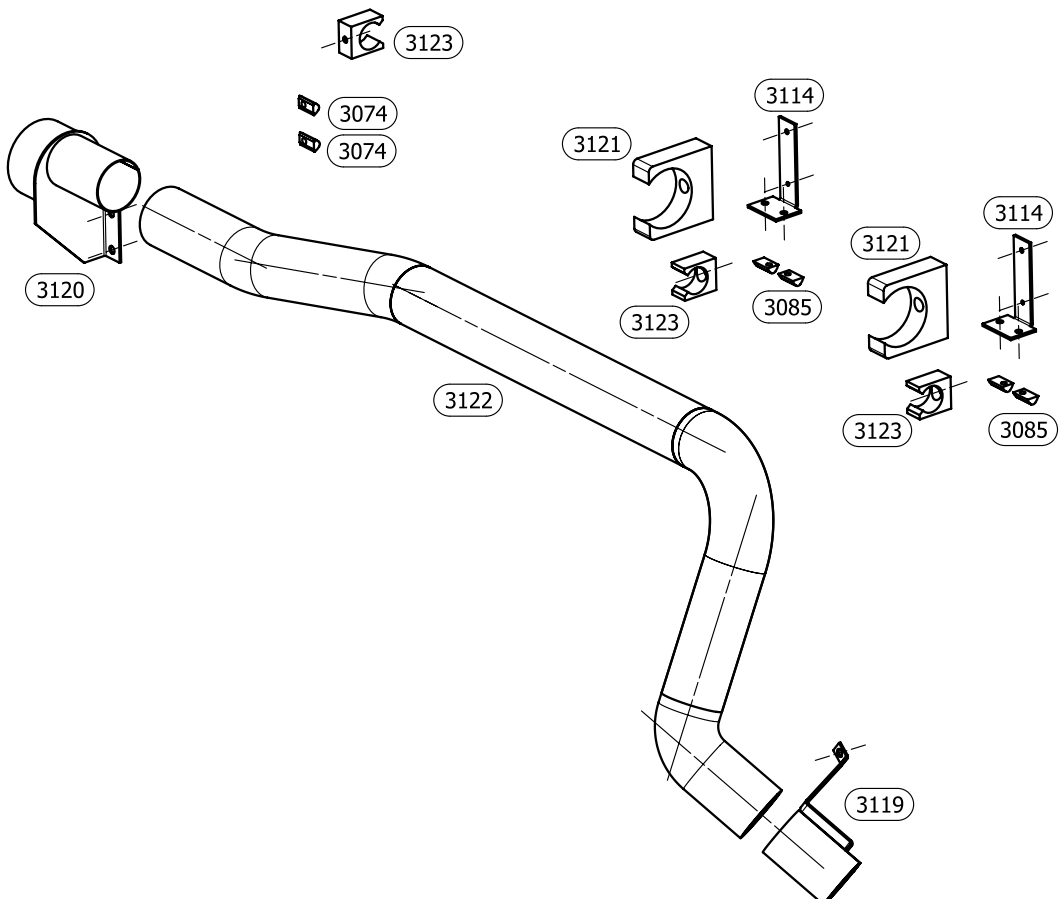


5. Foot extension



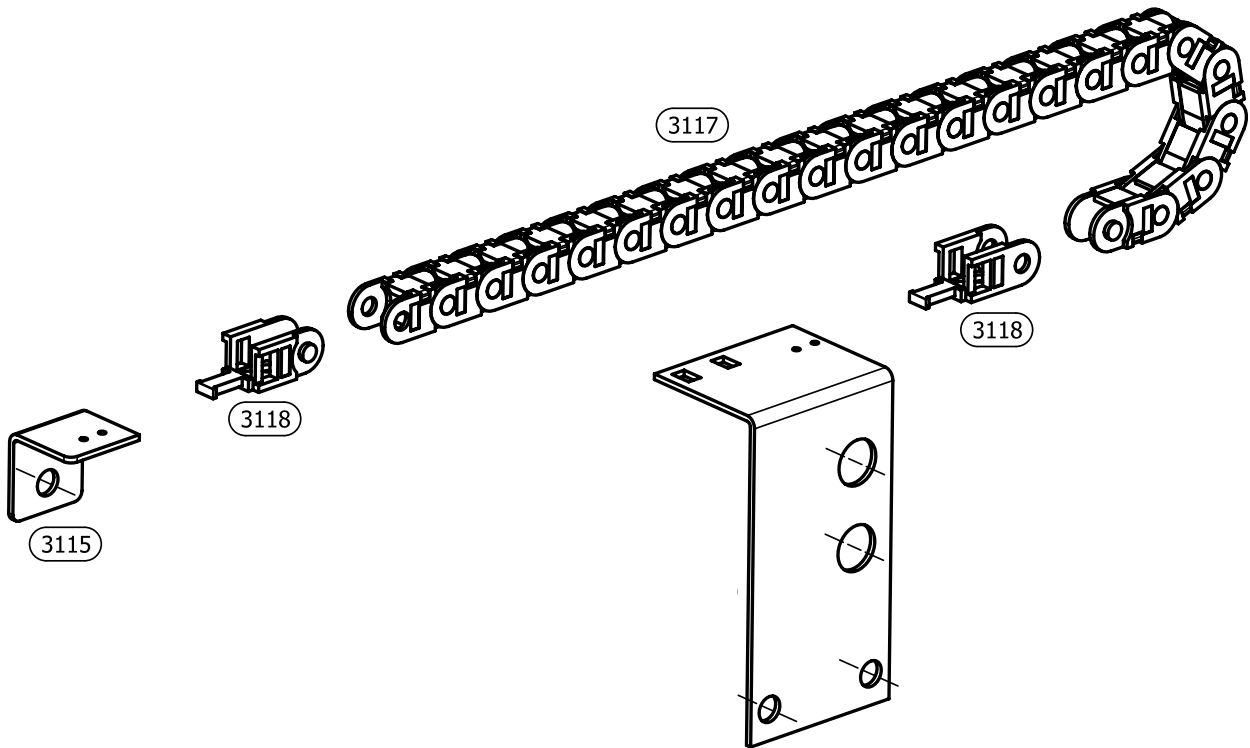
en

6. Suction extractor



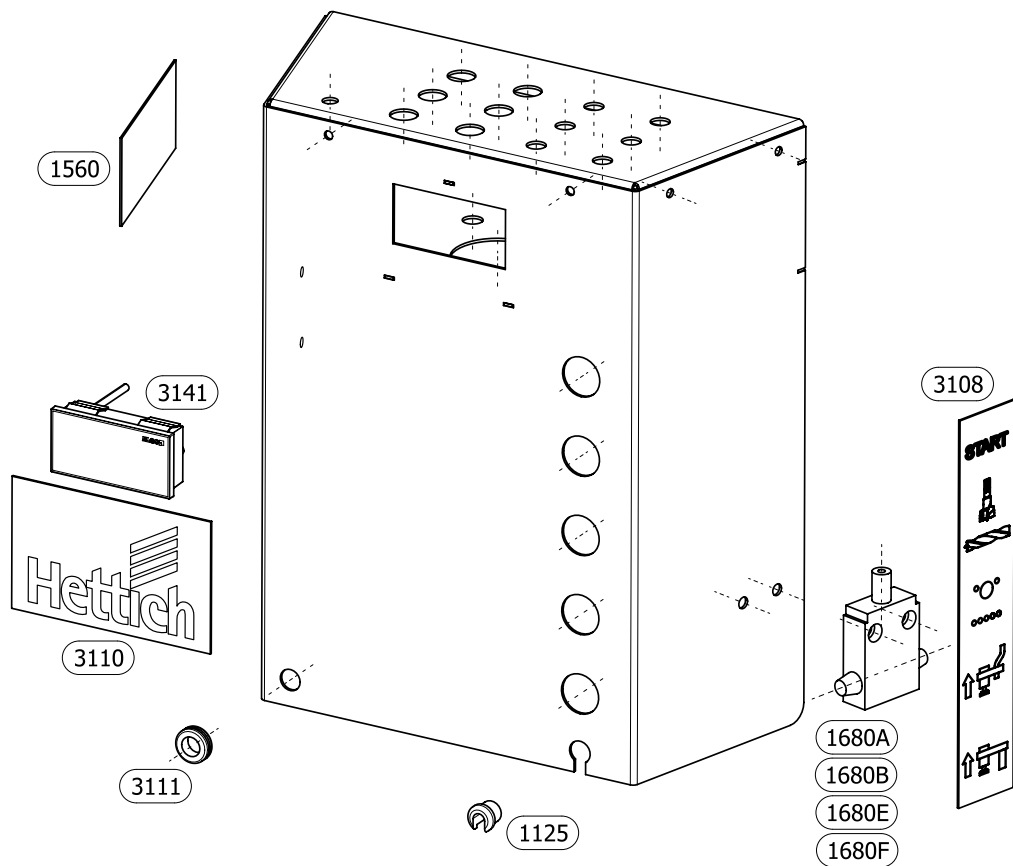
Replacement parts lists

7. Cable drag chain

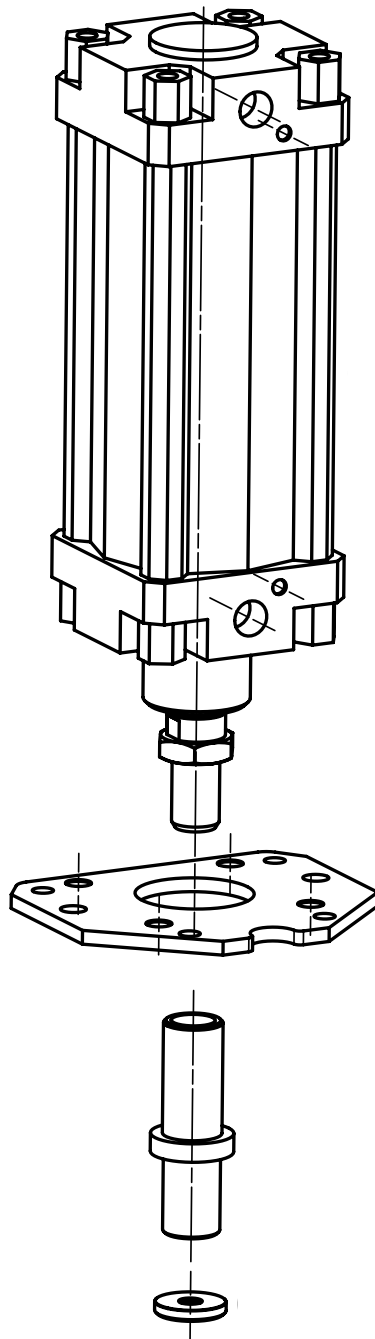


en

8. Console



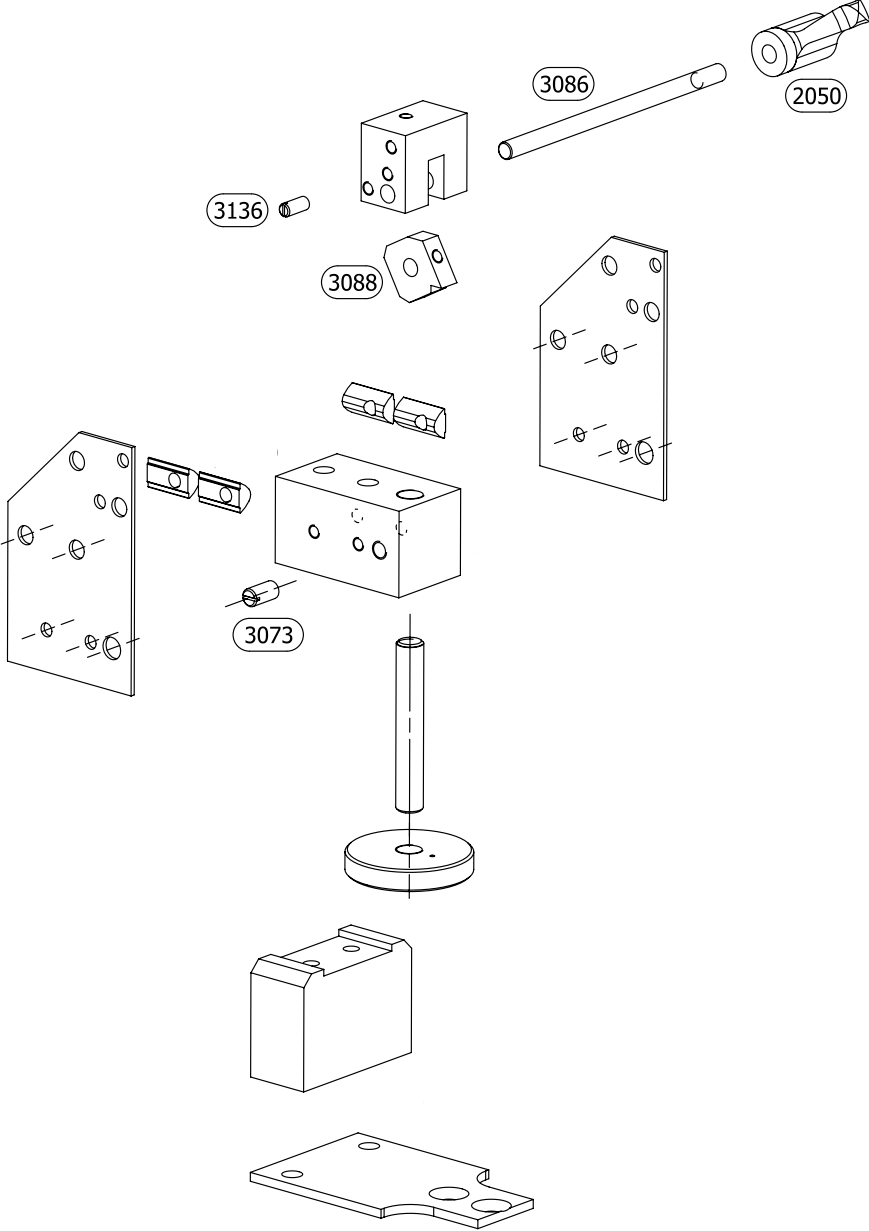
9. Lifting cylinder



en

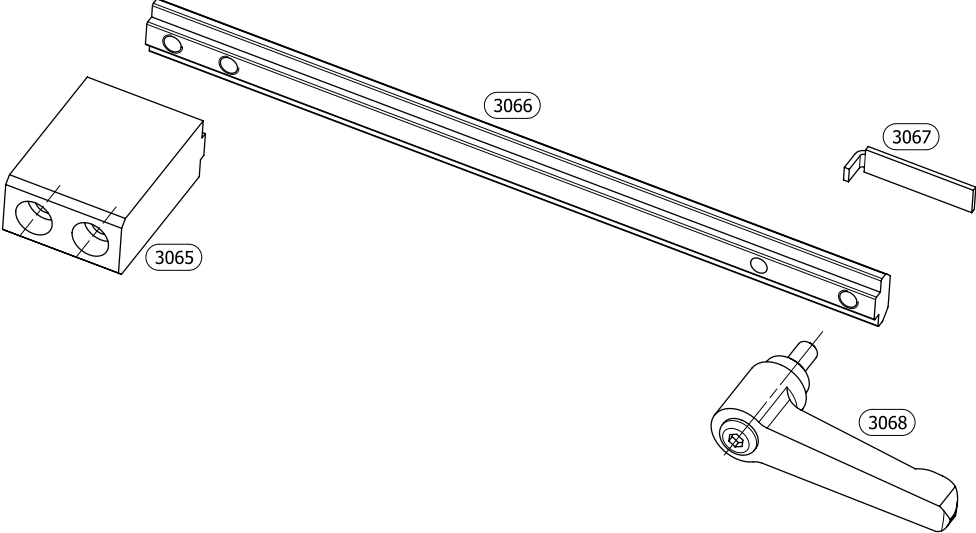
Replacement parts lists

10. Drill depth stop

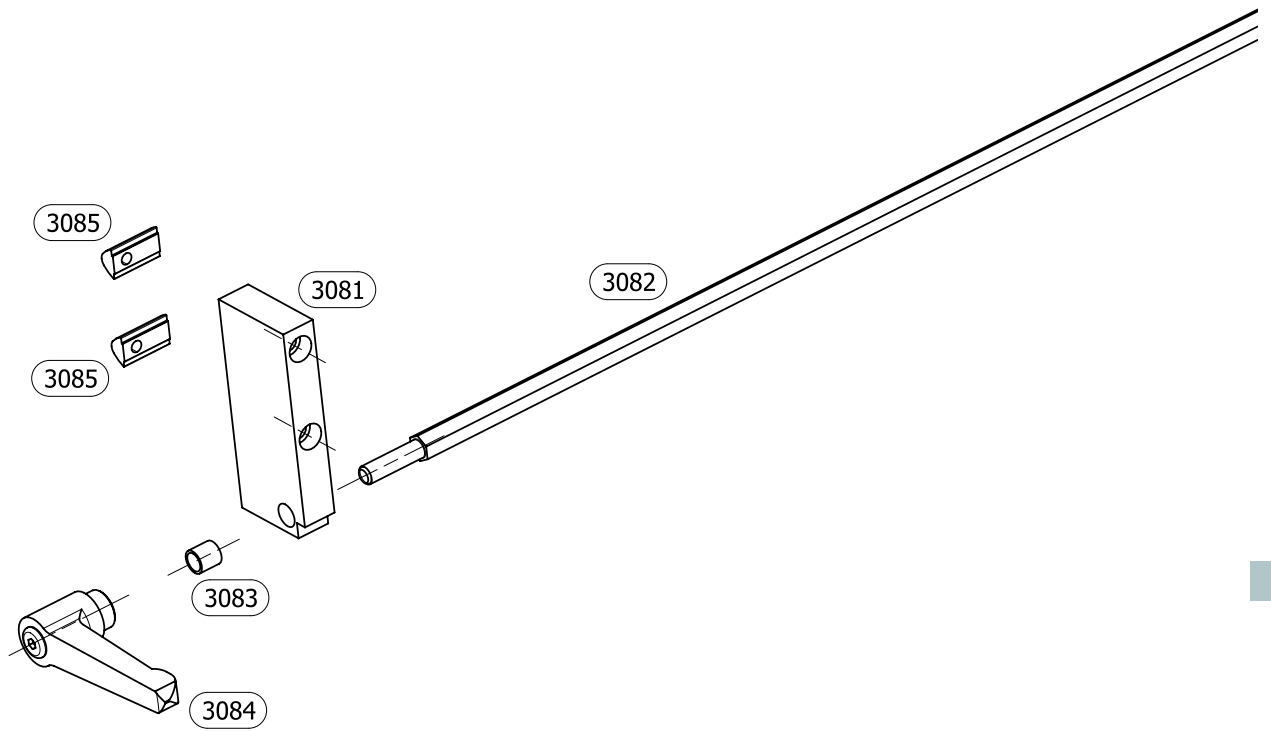


en

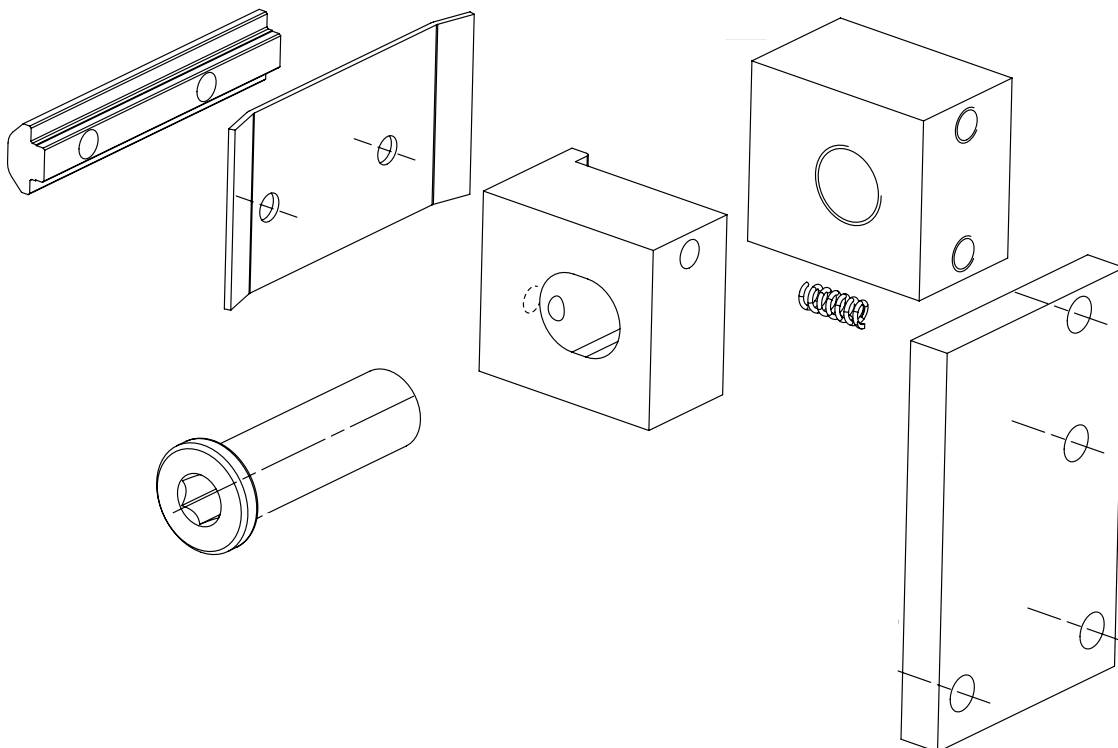
11. Adjustable stop



12. Clamping element

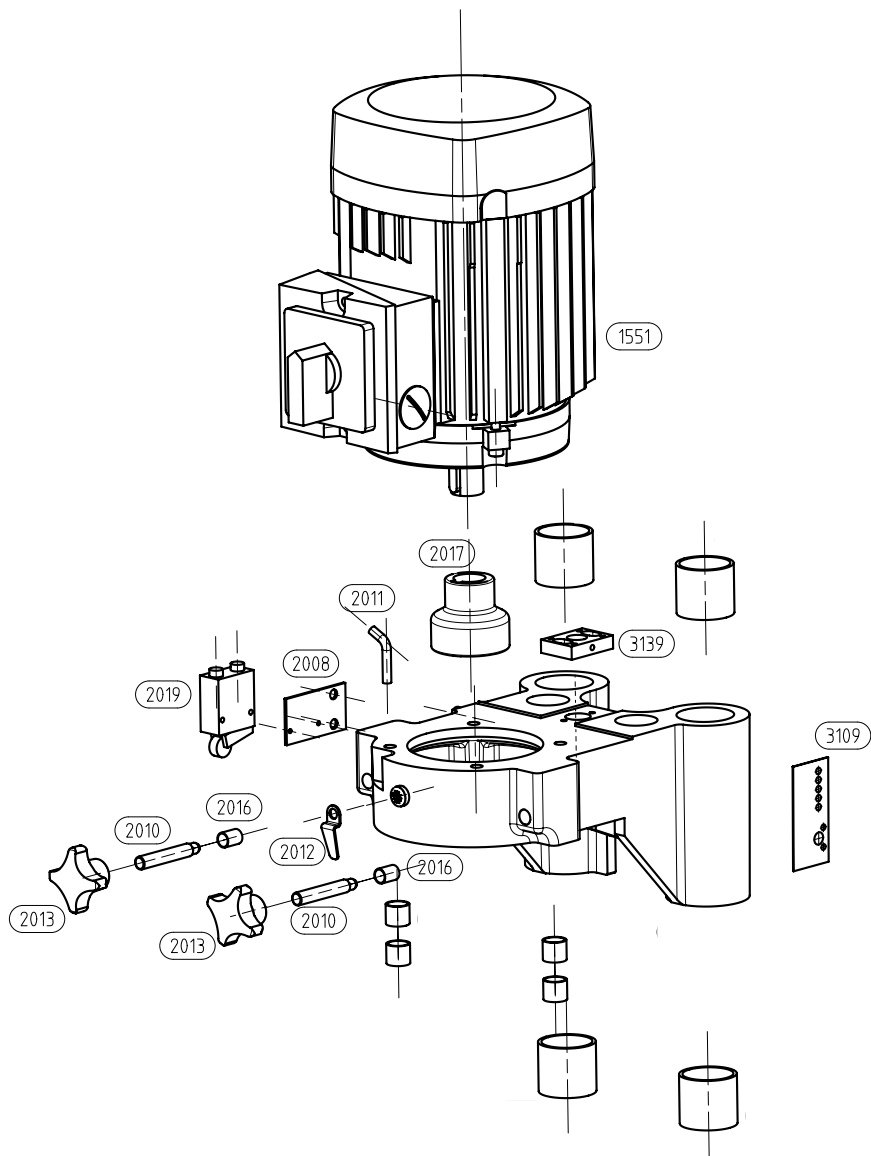


en

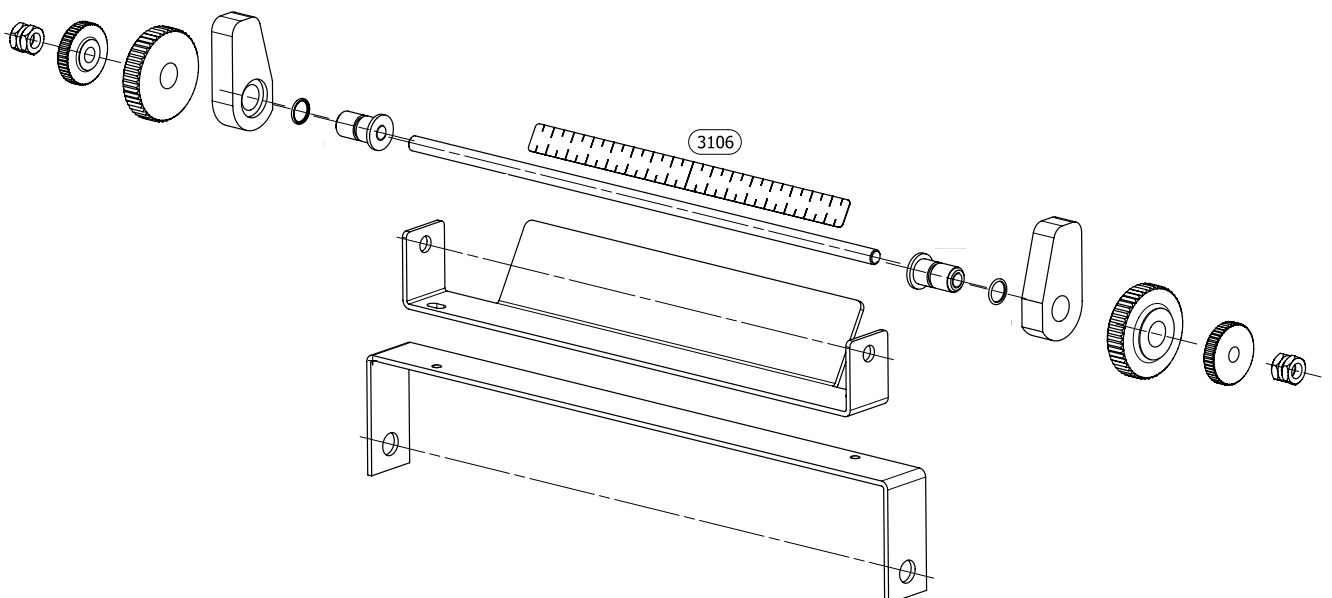


Replacement parts lists

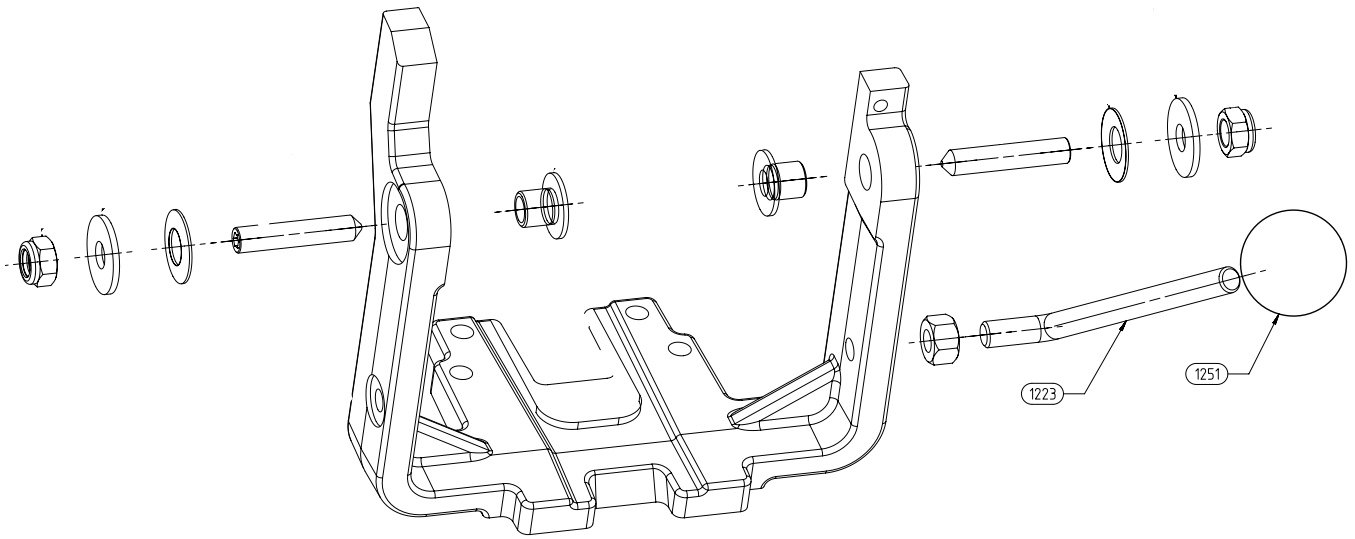
13. Motor with support



14. Centre stop

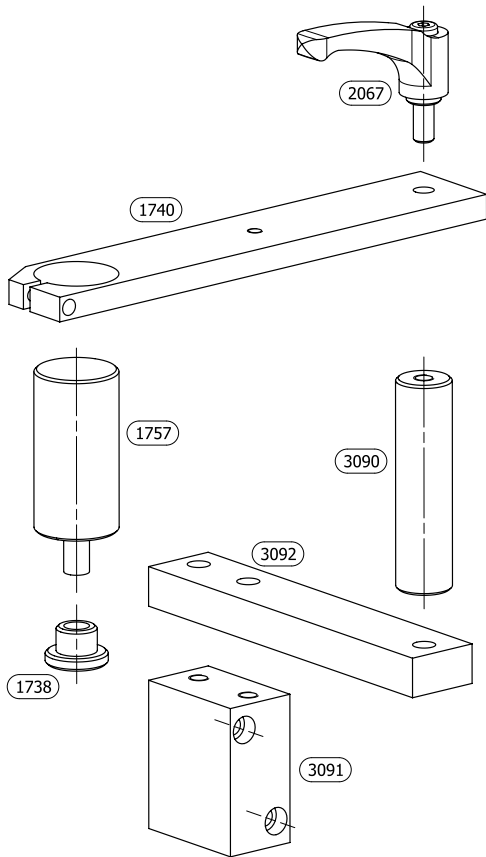


15. For press-in frame

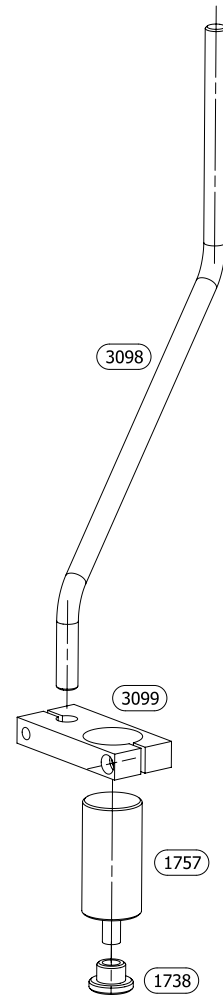


en

16. Hold-down clamp, rear

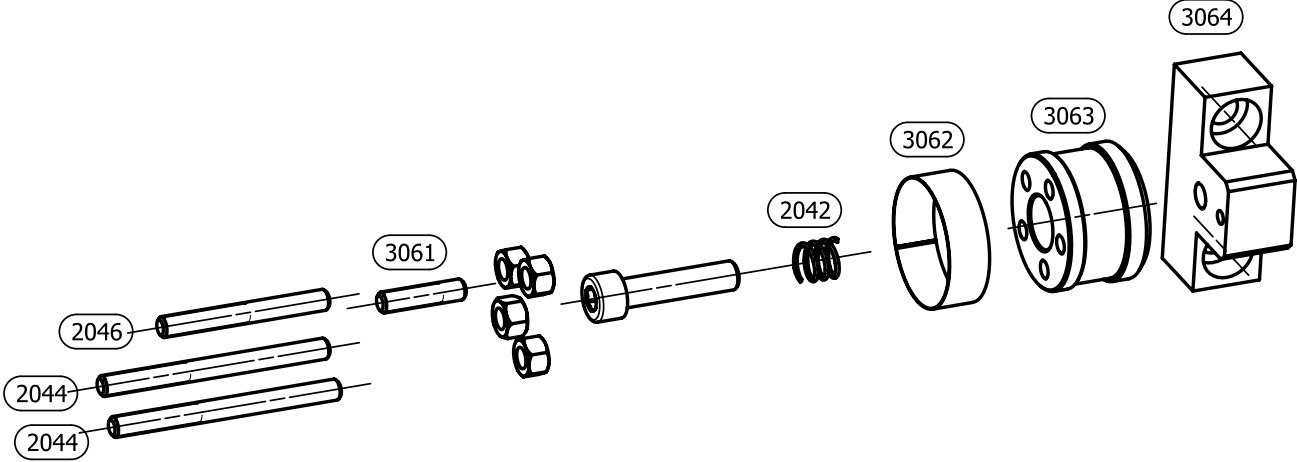


17. Hold-down clamp, front



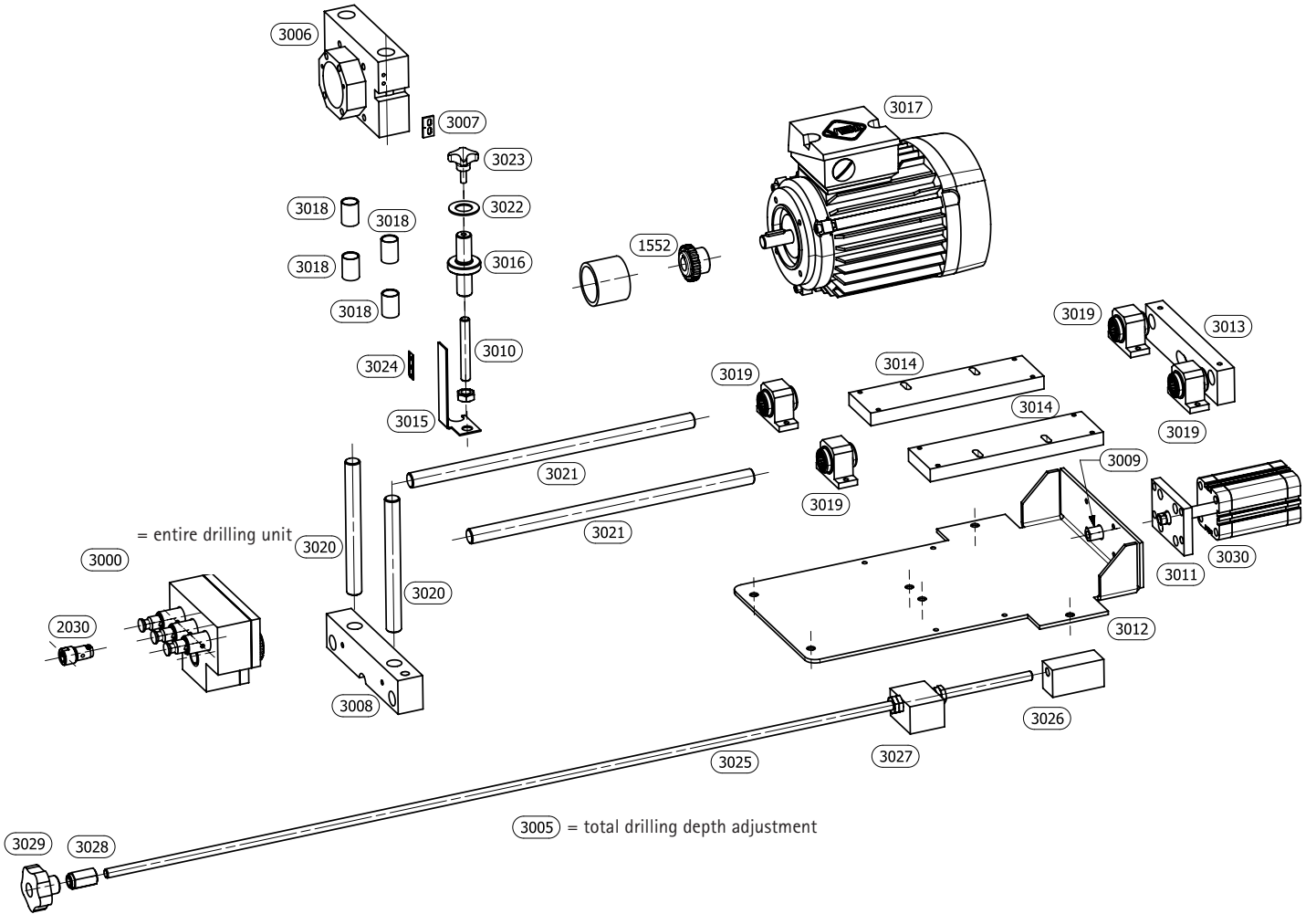
Replacement parts lists

18. Drum stop



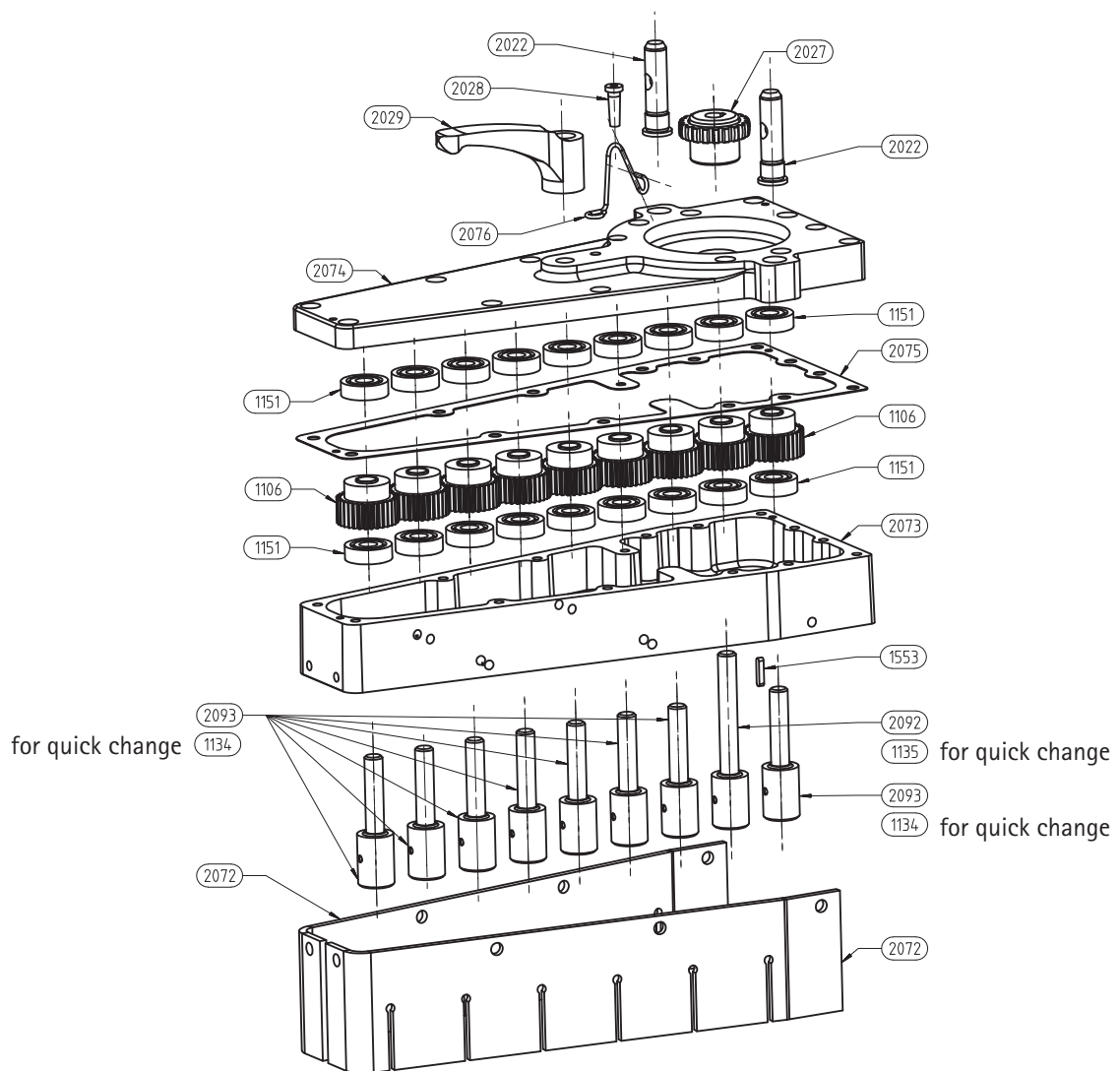
en

19. Horizontal drilling unit

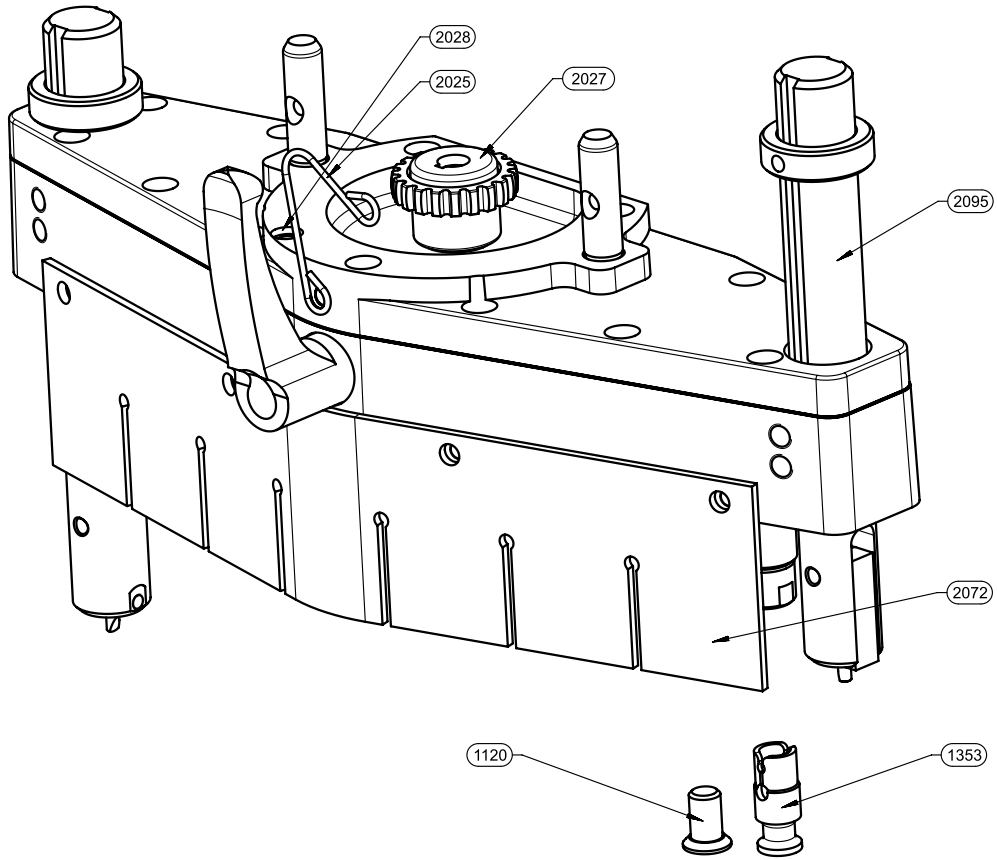


Replacement parts lists

20. Interchangeable drilling unit, 90°, 9 spindles

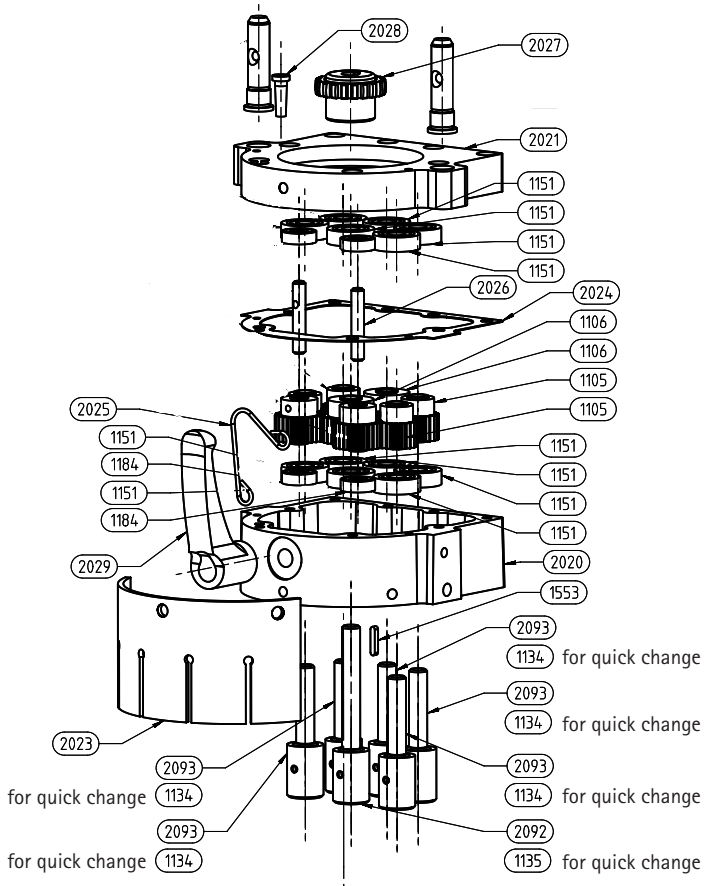


21. Interchangeable drilling unit, 9 spindles

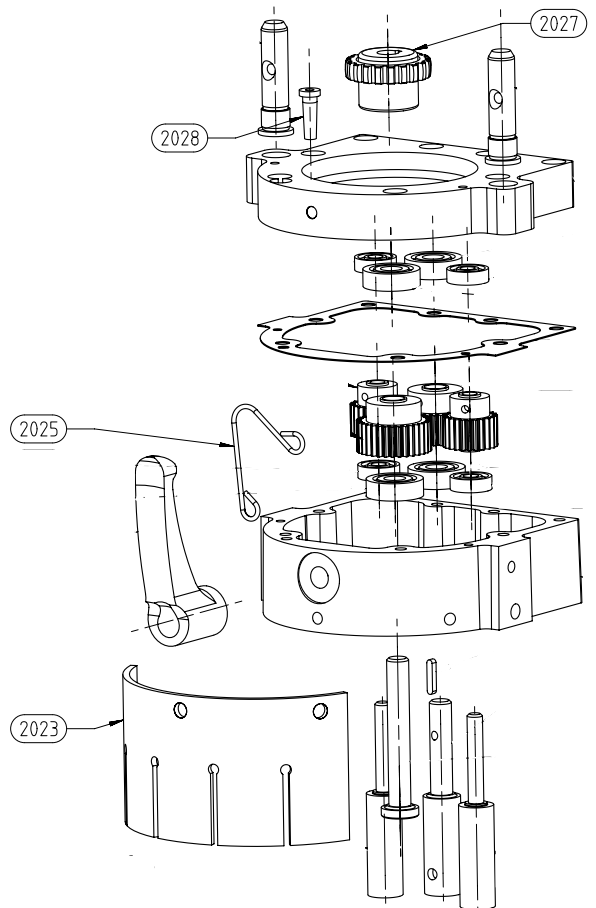


en

22. Interchangeable drilling unit, 6 spindles



23. Interchangeable drilling unit, 3 spindles, Selekt (22/9)



Replacement part numbers

13. Replacement part numbers

1551	Motor (specifications as per order)	3066	Stop profile bar
1552	Bowex curved tooth coupler assy 14-10	3067	Metal pusher
1560	Sticker, control panel	3068	Clamping lever
1680A	Electropneumatic switch 3~ 50 Hz	3073	Spring loaded ball screw
1680B	Electropneumatic switch 3~ 60 Hz	3074	Sliding block, M8
1680E	Electropneumatic switch 1~ 60 Hz	3081	Bearing
1680F	Electropneumatic switch 1~ 50 Hz	3082	Hexagonal bar
1738	Pressure plate for hold-down clamp	3083	Plain bearing
1740	Clamping plate for hold-down clamp	3084	Clamping lever, red
1757	Small cylinder stroke = 10 mm	3085	Sliding block, M6
2004	Insert for work surface	3086	Turning rod
2005	Slotted nut M8	3088	Handle
2008	Valve plate	3090	Hold-down clamp spacer
2010	Tensioning spindle	3091	Hold-down clamp retaining block
2011	Waste air pipe	3092	Hold-down clamp extension foot
2012	Sliding plate BM9	3094	Worktop
2013	Cross handle	3097	Round rubber cord
2016	Wire thread insert M8	3098	Hold down bar
2017	Bowex Junior size 19 d14	3099	Clamping plate for hold-down clamp
2019	Pushbutton roller valve	3106	Scale, self adhesive
2030	Drill chuck	3108	Sticker
2042	Compression spring	3109	Sticker
2044	Stop, 68 long	3110	Sticker
2046	Stop, 50 long	3111	Cable grommet
2050	Wing nut, one sided	3112	Travel measurement display
2067	Clamping lever	3114	Tube holder
3000	Horizontal drilling unit assy	3115	Drag angle
3005	Setting drilling depth	3117	Cable drag chain
3007	Zero marker	3118	Connecting elements
3009	Pipe sleeve	3119	Suction extraction connector
3017	Motor 0.55 kW (ph, specify voltage on ordering)	3120	Suction extractor reducer
3023	Cross grip screw	3121	Pipe clip 63 mm
3028	Guide nut	3122	Flexible hoes
3029	Star shaped grip	3123	Clip, PG21
3030	Compact cylinder	3136	Spring loaded ball screw
3041	Angle	3139	Laser clamp
3045	Counterholder, long	3141	Digital display
3046	Counterholder, short	3004	Eccentric tensioner
3049	Limiter	2097	Motor protection circuit breaker 1 - 1,6A
3052	D-handle	2098	Motor protection circuit breaker 4,6 - 2,5A
3061	Threaded stud	2099	Motor protection circuit breaker 4 - 6,3A
3062	Drum sticker	2100	Motor protection circuit breaker 2,5 - 4A
3063	Drum	2101	Motor protection circuit breaker 6,3 - 10A
3064	Drum retaining block	2102	Motor protection circuit breaker 10 - 16A
3065	Stop block, rear	2103	Insulated enclosure

Interchangeable drilling unit

1120	Cap for chuck
1353	Cap for quick release chuck
2023	Drill bit guard, 6 spindle unit
2025	Wire spring 6/9R
2027	Bowex Junior coupler, size 19
2028	Cable grommet
2072	Drill bit guard 9R/9W
2076	Wire spring, 9W
2095	Continuation stop assembly