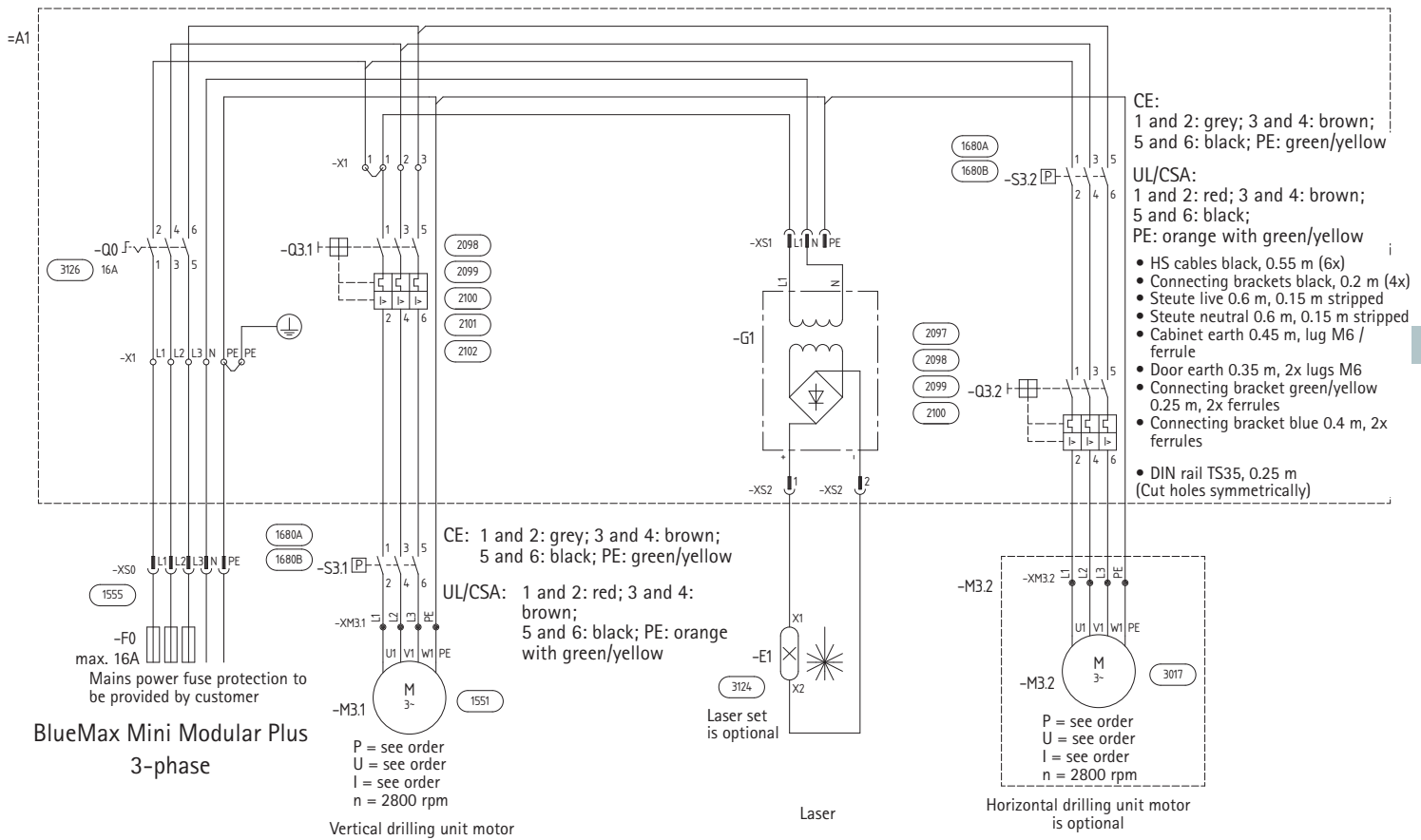




## 25. Circuit diagram



# Replacement part numbers

## 13. Replacement part numbers

1551	Motor (specifications as per order)	3066	Stop profile bar
1552	Bowex curved tooth coupler assy 14-10	3067	Metal pusher
1560	Sticker, control panel	3068	Clamping lever
1680A	Electropneumatic switch 3~ 50 Hz	3073	Spring loaded ball screw
1680B	Electropneumatic switch 3~ 60 Hz	3074	Sliding block, M8
1680E	Electropneumatic switch 1~ 60 Hz	3081	Bearing
1680F	Electropneumatic switch 1~ 50 Hz	3082	Hexagonal bar
1738	Pressure plate for hold-down clamp	3083	Plain bearing
1740	Clamping plate for hold-down clamp	3084	Clamping lever, red
1757	Small cylinder stroke = 10 mm	3085	Sliding block, M6
2004	Insert for work surface	3086	Turning rod
2005	Slotted nut M8	3088	Handle
2008	Valve plate	3090	Hold-down clamp spacer
2010	Tensioning spindle	3091	Hold-down clamp retaining block
2011	Waste air pipe	3092	Hold-down clamp extension foot
2012	Sliding plate BM9	3094	Worktop
2013	Cross handle	3097	Round rubber cord
2016	Wire thread insert M8	3098	Hold down bar
2017	Bowex Junior size 19 d14	3099	Clamping plate for hold-down clamp
2019	Pushbutton roller valve	3106	Scale, self adhesive
2030	Drill chuck	3108	Sticker
2042	Compression spring	3109	Sticker
2044	Stop, 68 long	3110	Sticker
2046	Stop, 50 long	3111	Cable grommet
2050	Wing nut, one sided	3112	Travel measurement display
2067	Clamping lever	3114	Tube holder
3000	Horizontal drilling unit assy	3115	Drag angle
3005	Setting drilling depth	3117	Cable drag chain
3007	Zero marker	3118	Connecting elements
3009	Pipe sleeve	3119	Suction extraction connector
3017	Motor 0.55 kW (ph, specify voltage on ordering)	3120	Suction extractor reducer
3023	Cross grip screw	3121	Pipe clip 63 mm
3028	Guide nut	3122	Flexible hoes
3029	Star shaped grip	3123	Clip, PG21
3030	Compact cylinder	3136	Spring loaded ball screw
3041	Angle	3139	Laser clamp
3045	Counterholder, long	3141	Digital display
3046	Counterholder, short	3004	Eccentric tensioner
3049	Limiter	2097	Motor protection circuit breaker 1 - 1,6A
3052	D-handle	2098	Motor protection circuit breaker 4,6 - 2,5A
3061	Threaded stud	2099	Motor protection circuit breaker 4 - 6,3A
3062	Drum sticker	2100	Motor protection circuit breaker 2,5 - 4A
3063	Drum	2101	Motor protection circuit breaker 6,3 - 10A
3064	Drum retaining block	2102	Motor protection circuit breaker 10 - 16A
3065	Stop block, rear	2103	Insulated enclosure

### Interchangeable drilling unit

1120	Cap for chuck
1353	Cap for quick release chuck
2023	Drill bit guard, 6 spindle unit
2025	Wire spring 6/9R
2027	Bowex Junior coupler, size 19
2028	Cable grommet
2072	Drill bit guard 9R/9W
2076	Wire spring, 9W
2095	Continuation stop assembly